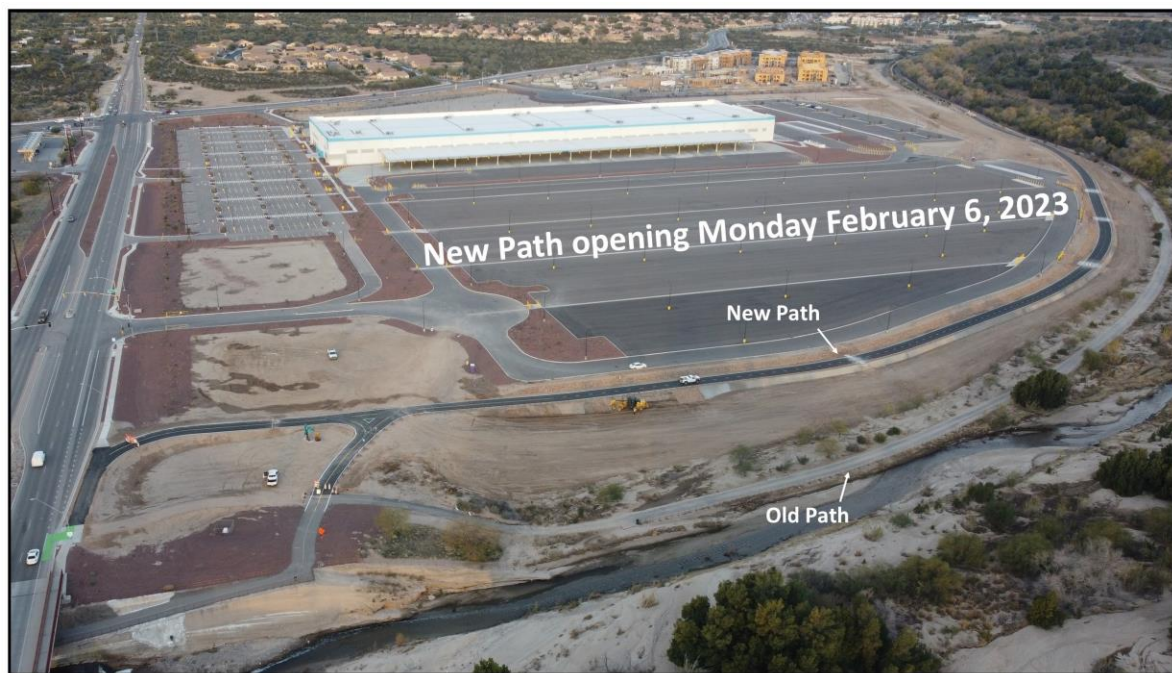




February 3, 2023

Continental Ranch Regional Pump Station Force Main Augmentation Project

Borderland Construction, under contract with Pima County Regional Wastewater Reclamation Department, has begun construction to install the new dual 24-inch pipe from the Continental Ranch Regional Pump Station (CRRPS), ultimately tying-in to the completed segment south of the Crossroads at Silverbell District Park between Cortaro and Ina roads.



The contractor has finished installing new bank protection along with relocating a portion of the Loop pathway near the new Amazon facility north of Ina Road. The bank protection improvements provided the opportunity to raise a portion of the Loop pathway out of the Santa Cruz River flood zone, giving the public a safer more reliable walking and biking experience.

- **At 8:00am on Monday, February 6, 2023**, access to the new Loop pathway will be **OPEN** along the west side of the Santa Cruz River, between Ina and Cortaro roads.

When the entire Force Main project is complete, it will provide seven miles of a new dual force main sewer system between the Continental Ranch Regional Pump Station (CRRPS), and the Tres Ríos Water Reclamation Facility (WRF). The Loop travelers will also enjoy a newly paved pathway that will be installed from the El Rio Preserve area to Cortaro Road. The project is expected to be complete by early 2024.

Click this link <https://sewerimprovements.com/crrps-map> to view the interactive project map to track the progress of construction and which segments of the loop remain accessible during construction

You can sign up on the project website www.sewerimprovements.com to receive electronic construction notifications delivered to your email account.